

Composite, Timber and Flat Entrance Doorsets



Contents

| | |
|--|---------|
| Composite external doorsets | 5 - 6 |
| External door options | 7 |
| Clifton Timber external doorsets | 8 - 9 |
| Kensington Timber external doorsets | 10 - 12 |
| Mackintosh inspired Timber external doorsets | 13 |
| Securefit™ High performance flat-entrance doorsets | 14 - 17 |
| Sidelights and Brickwork openings | 18 |
| How to order | 19 |

Pictorial Guide

Composite Door Collection



BARNARD



DUNSTER



CLIFFORD



WALDEN



RISING



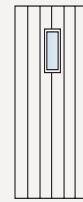
TILSBURY



UPNOR



KEEP



COTTAGE



STRAND

The Clifton Collection



PATT 10



PATT 2XGG



PATT 2XG



PATT 70



PATT SA



PATT SC

The Mackintosh Collection



ABINGTON



LENZIE



MCKEAN



TORRANCE

The Kensington Collection



CROFT



EVERSLEY



HARLEQUIN



REDESDALE



THORNBURY

The Kensington Plus Pre-finished Collection



SERNA



ROMERO

The Securefit™ Collection - Flat entrance doorsets

MOULDED DOORS



ROCKPORT



ARLINGTON



ATHERTON



CAMBRIDGE



CAMDEN



BOSTONIAN



OAKFIELD

REAL WOOD VENEERED - FLAT ENTRANCE DOORSETS



AFRICAN
MAPLE



SAPELE



BEECH



WHITE OAK



KOTO



ASH

PAINT GRADE VENEER - FLAT ENTRANCE DOORSETS

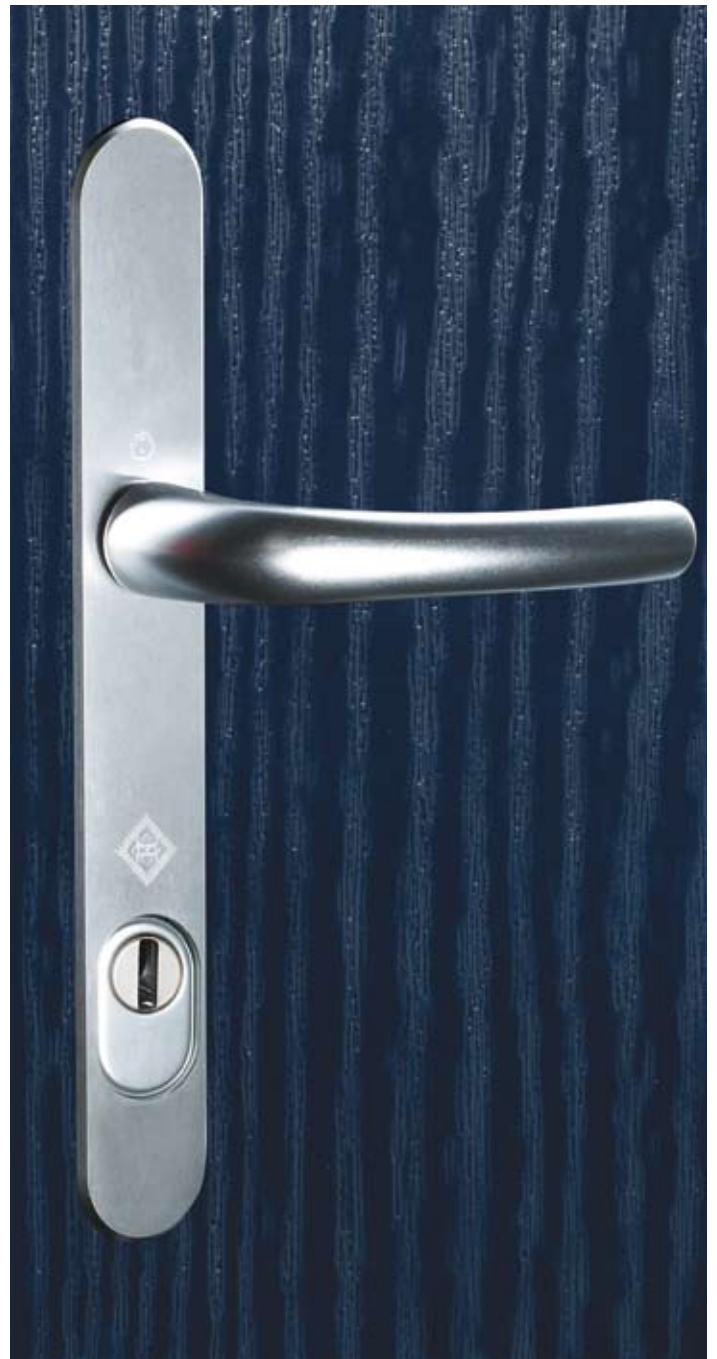


FLUSH

JELD-WEN offers you a choice of the best possible External Doorsets available on the market today. Not just one, but a range of materials, styles and glass options depending on your individual choice.

VALUE & PERFORMANCE from our **NEW** range of doorsets

In our modern premises we use state of the art machinery combined with high performance materials to assure you of the best possible entrance doorset available today. We also provide a valuable back-up service for all products, from advice before you order, and our technical assistance service engineers are only a phone call away should you ever need them.



Composite Doorset Collection



All skins are manufactured with a woodgrain effect creating the look of real timber. Durable and long lasting the factory finished doorset requires no further site decoration making installation quicker.

STANDARD SPECIFICATIONS

- White adjustable interior hinge
- Multi-point lock
- Silver Effect fittings - Satin finish
- Factory finished Hi-Build white engineered softwood frame
- Chrome effect letter plate & security viewer
- Fully finished door in your choice of colour
- 140mm Hardwood sill with Mobility threshold
- Factory glazed obscure ice effect
- 6.4mm laminated outer pane
- 15.5mm Chrome spacer bar
- 4mm toughened inner pane
- PAS 24 (Dec 07) General Vulnerability Assessment
BS EN 1303 Grade 5 key security with grade 0 attack resistance/grade 2 drill resistance



OPTIONAL EXTRAS

- Gold effect fittings
- Brown adjustable hinges
- Gold or silver effect security chain
- Glazing clear or other obscure effects (see page 7)
- See page 7 for frame factory finish colour choices
- Hardwood door frame
- Special sizes available

DOOR FINISH

The scratch resistant pre-pigmented skins are through-coloured in a choice of five popular colours. The through colour means the skin is coloured throughout and therefore minor damage will not reveal a different colour beneath unlike some other doors.

Two stained finishes are also available for the traditional timber look, Light Oak and Mahogany. These are not through coloured.

FIRE DOOR OPTION

- FD30 Fire Doorset available in Dunster, Clifford, Barnard & Upnor styles only.
- Available in White/White or Mahogany/White finish.
- Clear or Oak Leaf Obscure glass

DOOR FINISHES*



THROUGH COLOURS

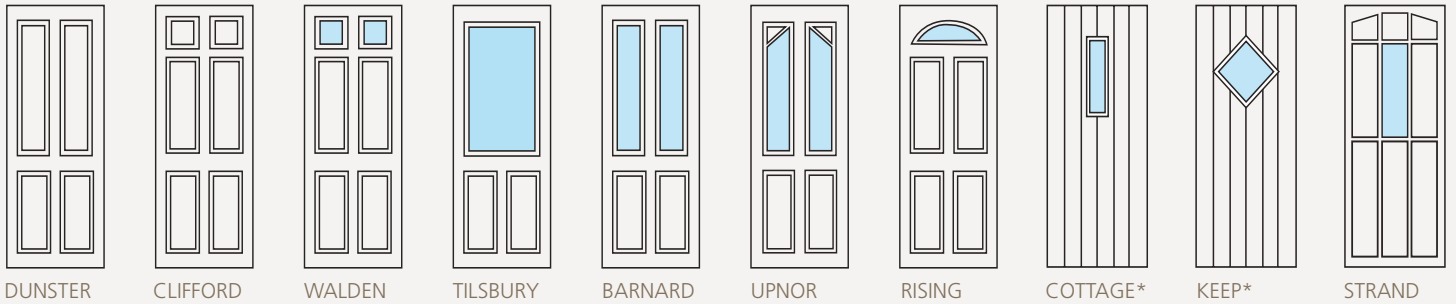
BLACK BLUE WHITE RED GREEN

STAINED EFFECT

LIGHT OAK MAHOGANY

*Internal face is always white, external face finishes shown above.

(Light Oak & Mahogany stained effects are not available in the Cottage and Keep designs)



DUNSTER

CLIFFORD

WALDEN

TILSBURY

BARNARD

UPNOR

RISING

COTTAGE*

KEEP*

STRAND

*Through colour only

| Doorset Size | Door Size 44mm Thick | DUNSTER | CLIFFORD | WALDEN | TILSBURY | BARNARD | UPNOR | RISING | COTTAGE | KEEP | STRAND |
|-----------------|-------------------------|------------|------------|------------|------------|------------|------------|------------|------------|------------|------------|
| 851 X 2095mm | 762 x 1981mm | 26DTR+DSFF | 26CFD+DSFF | 26WDN+DSFF | 26TBY+DSFF | 26BND+DSFF | 26UPR+DSFF | 26RSG+DSFF | 26COT+DSFF | 26KEP+DSFF | 26STR+DSFF |
| 927 X 2095mm | 838 x 1981mm | 29DTR+DSFF | 29CFD+DSFF | 29WDN+DSFF | 29TBY+DSFF | 29BND+DSFF | 29UPR+DSFF | 29RSG+DSFF | 29COT+DSFF | 29KEP+DSFF | 29STR+DSFF |
| 1003 X 2095mm | 914 x 1981mm | 30DTR+DSFF | 30CFD+DSFF | 30WDN+DSFF | 30TBY+DSFF | 30BND+DSFF | 30UPR+DSFF | 30RSG+DSFF | 30COT+DSFF | 30KEP+DSFF | 30STR+DSFF |
| Doorset U Value | | 1.15 | 1.15 | 1.4 | 1.9 | 1.6 | 1.6 | 1.4 | 1.4 | 1.4 | 1.6 |

Structural Openings, see page 18

At time of ordering, please quote handing of doorset and opening in or out. When determining handing, doors are viewed from the outside.

The composite door is best described as a combination of the top attributes of all types of modern door materials. Unlike some other doors composite, sometimes known as GRP, will not splinter, dent or rust assuring you of a good investment in your property and up to six times greater heat insulation than a comparable timber door.

SECURITY

Security is also assured as each doorset comes complete with a full multipoint lock and softwood factory finished frame, tested to Secured by Design standards, the Police preferred specification.

BENEFITS

- 10 door designs
- 7 door finishes
- Choice of glazing designs clear or Oakleaf, Dew & Tulip obscure
- Pre hung in doorsets
- All doorsets meet the requirements of PAS 23/24
- All doorsets meet the requirements of Part L 2006
- Pre-finished softwood frame in Hi-Build white with other colours available as an option

ENERGY EFFICIENT AND LOW ENVIRONMENTAL IMPACT

- The panel has six times better insulation than a timber door
- Polyurethane core is 100% CFC-free and offers enhanced sound and heat insulation
- Door slab has U Value of 0.63 W/m²K

STABLE

- The thermoset manufacturing process means the panel will not expand or contract significantly with changing temperature
- Will not blow, warp, crack, splinter or dent

SECURE AND DURABLE

- High impact-resistant, GRP (Glass Reinforced Polyester) skins
- 44mm thick leaf for increased security

TECHNOLOGICALLY ADVANCED

- Pre-pigmented skins are scratch resistant and waterproof - engineered composite rails and stiles which completely seal the insulating core

AUTHENTIC APPEARANCE

- Woodgrain effect
- Compression moulded, high-definition, panel design

TECHNICAL INFORMATION

- Fibreglass skin both sides, nominal 2mm thickness
- Grained effect surface finish
- Fibreglass skin bonded to composite sub frame
- Additional inner hardwood stiles for torsional rigidity
- Lock block to each side
- Injection filled rigid polyurethane core
- HCFC thermally efficient core which is CFC free
- Global warming potential: <5
- Ozone depletion potential: 0
- Door leaf weight 25 kg (approx)
- Glazed doors utilise a unique snap together action cassette eliminating unsightly plugs and screws

Options

OBSOLETE GLAZING (COMPOSITE AND CLIFTON DOORSETS ONLY)



Oakleaf



Dew



Tulip



Ice

IRONMONGERY GOLD EFFECT (EXCLUDING CLIFTON)



Viewer



Letterplate



Handle



Chain

FRAME FACTORY FINISH COLOUR OPTIONS



Hi Build
Stain Baltic



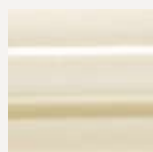
Hi Build



Buttermilk



Dusky
Grey



Gardenia

Clifton Timber Single Doorset Collection



Available in six door styles, the Clifton doorset is manufactured from engineered knot-free clear timber. It complies fully with Building Regulation Part 'L' and can achieve part M compliance depending on installation detail. With a 54mm door leaf thickness the Clifton doorset is the ideal choice for your home.

GLAZING

We supply Clifton doors and sidelights with factory fitted 24mm clear Low E insulating glass units, with a centre pane *U* Value of 1.4 W/m²K. Other glazing options are available at extra cost, these include leaded designs and simulated divided lights. The standard Clifton doorset has a *U* Value of 1.9W/m²K. Higher specifications including triple glazing are available.

Call us on **0845 122 2890** to discuss your requirements or for prices.

Softwood Conservation Fret

Now available on the Clifton Doorset range as an optional extra.



FINISHING

All Clifton doorsets are treated with an advanced preservative system. We supply them with one coat of harmonising base stain or primer, ready for your choice of finish. We recommend Hi-Build factory finishes for these products.

HARDWARE

These doors come complete with ironmongery and multi-point locking. silver effect satin finish fittings and threshold are standard, or you can choose the brass effect fittings and threshold.

DIMENSIONS

The Clifton is available in two doorset widths

- 856mm (PP8) • 932mm (PP9)* with three sidelight options:
- 300mm • 450mm (4SP) • 600mm (6SP)

The sill depth is 170mm.

RAIN DEFLECTOR

For those more exposed locations Aluminium Rain Deflector Weathermoulds are supplied loose for on site fitting.

CONFIGURATION OPTIONS

You can order Clifton doors to open in or out. Left hand or right hand hung (when viewed from the outside). We can supply the doorsets with a Sovereign Stormsure

window attached with a continuous head section. As well as the single configuration, the Clifton is available as a Double Doorset. For full details, refer to the Windows catalogue.

SECURED BY DESIGN

The Clifton Doorset is available with an enhanced Security Specification to meet the requirements of Secured By Design, the Police Preferred Specification.



STANDARD SPECIFICATIONS

- Factory clear glazed
- Primed for your choice of paint or stain
- Silver effect / satin finish hardware
- White adjustable hinge †
- Multi-point locking
- PEFC Chain of Custody Certified



OPTIONAL EXTRAS

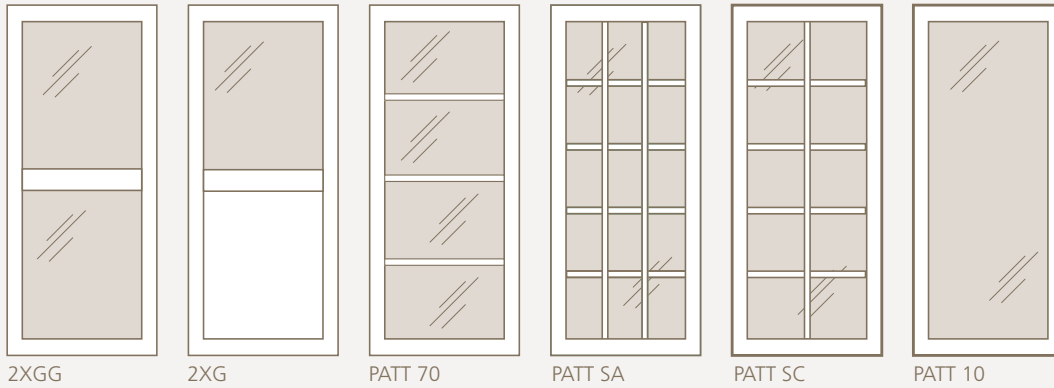
- Glazing options
- Factory finish
- Secured By Design
- Gold effect hardware
- Brown adjustable hinge †
- Double doorset



† If basecoat stain or factory finish stain is selected, brown hinge will be supplied.

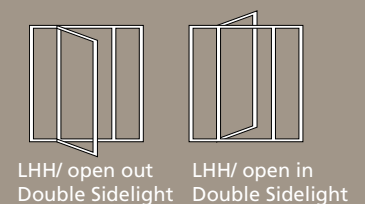
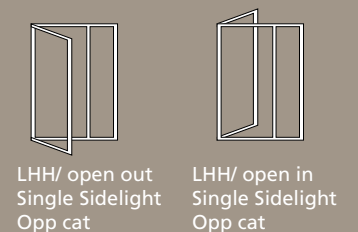
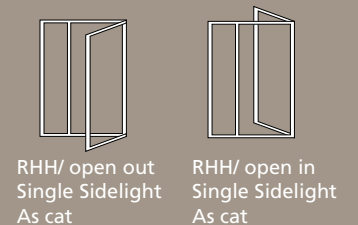
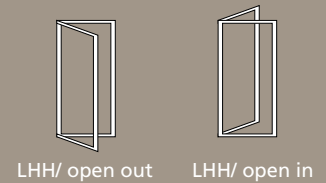
* Suitable for Building Regulations Part M primary access requirements subject to installation detail.

STYLE OPTIONS



| Open | Doorset Size 851x2094mm | Style 2XGG | Style 2XG | Style PATT 70 | Style PATT SA | Style PATT SC | Style PATT 10 |
|--------------------------|----------------------------|---------------|--------------|------------------|------------------|------------------|------------------|
| | Door Size | | | | | | |
| OPEN IN | 758 x 1989mm | PP8NM | PP8NMP | PP8N70 | PP8NSA | PP8NSC | PP8N |
| OPEN OUT | 758 x 1989mm | PP8XM | PP8XMP | PP8X70 | PP8XSA | PP8XSC | PP8X |
| Secured By Design | | | | | | | |
| OPEN IN | | | PP8NMSBD | PP8NMPSBD | PP8N70SBD | PP8NSASBD | PP8NSCSBD |
| OPEN OUT | | PP8XMSBD | PP8XMPSBD | PP8X70SBD | PP8XSASBD | PP8XSCSBD | PP8XSBD |
| Open | Doorset Size 927x2094mm | Style 2XGG | Style 2XG | Style PATT 70 | Style PATT SA | Style PATT SC | Style PATT 10 |
| | Door Size | | | | | | |
| OPEN IN | 834 x 1989mm | PP9NM | PP9NMP | PP9N70 | PP9NSA | PP9NSC | PP9N |
| OPEN OUT | 834 x 1989mm | PP9XM | PP9XMP | PP9X70 | PP9XSA | PP9XSC | PP9X |
| Secured By Design | | | | | | | |
| OPEN IN | | | PP9NMSBD | PP9NMPSBD | PP9N70SBD | PP9NSASBD | PP9NSCSBD |
| OPEN OUT | | PP9XMSBD | PP9XMPSBD | PP9X70SBD | PP9XSASBD | PP9XSCSBD | PP9XSBD |

DOOR CONFIGURATION VIEWED FROM THE OUTSIDE



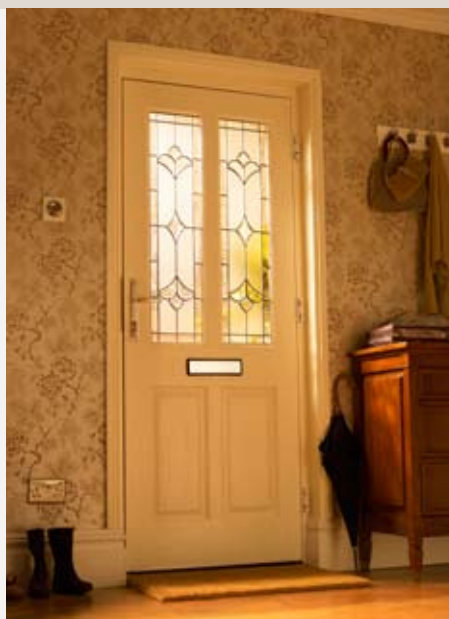
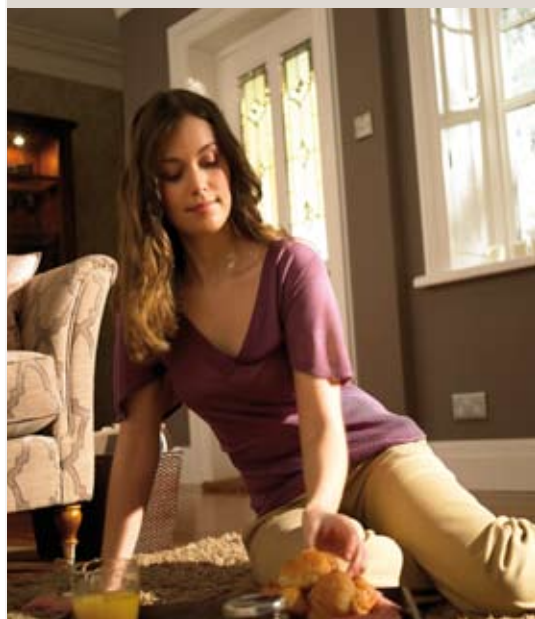
STRUCTURAL OPENINGS, SEE PAGE 18

ADDING TO THE CODE FOR SIDELIGHTS - please contact us for prices

1 x 300 Sidelight = 3S/A or 3 S/O 2 x 300 Sidelights = 3SS
 1 x 450 Sidelight = 4S/A or 4 S/O 2 x 450 Sidelights = 4SS
 1 x 600 Sidelight = 6S/A or 6 S/O 2 x 600 Sidelights = 6SS
 A signifies As cat handing, O signifies opposite cat handing.

If you require any further assistance please call our customer services team on **0845 122 2890** or visit us at www.jeld-wen.co.uk

Kensington Timber Doorset Collection



This range of distinctive external doorsets features original glazing designs. Subtle colours from taupe, soft charcoal grey to the palest rose complement any décor, and a mixture of obscure and clear glass sections adds visual interest. The units are triple glazed, using black leading and bevelled glass, for even more appealing reflections of light. Sturdily built from high quality hardwood, these engineered 44mm doors will create a striking impression for any entrance. Practical as well as beautiful, complete with 5" stiles to take a wide range of locking mechanisms.

The Kensington Collection doors are Chain of Custody Certified by the FSC (Forest Stewardship Council) This means the timber used to manufacture these doors comes from forests which are well managed according to strict environmental standards. We supply the door unfinished, ready for you to decorate to your taste.



STANDARD SPECIFICATION

- Factory glazed door (as depicted opposite)
- Unfinished for your choice of paint or stain
- Brown adjustable hinge
- Multi point locking
- Silver handle satin finish
- PEFC Certified Softwood basecoat stained frame
- 140mm hardwood sill with mobility threshold



OPTIONAL EXTRAS

- Factory finishing to frame only
- Letter plate, security chain and viewer in gold or silver effect - see page 7
- Gold effect handle and cylinder thumbturn handle in gold or silver effect
- White adjustable hinge
- Secured By Design Croft doorset
- Fully finished frame



CROFT

EVERSLEY

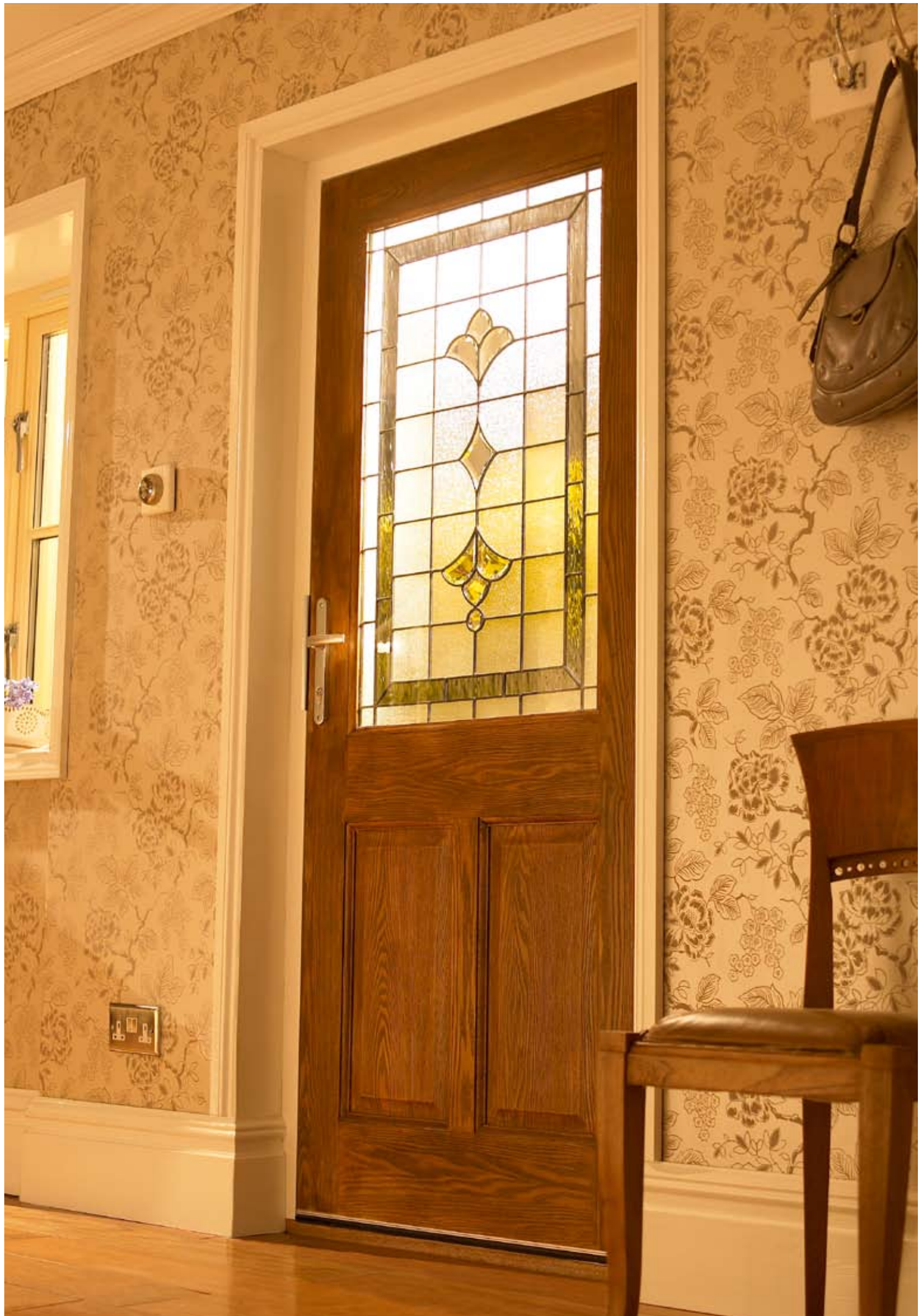
HARLEQUIN

REDESDALE

THORNBURY

| Door | Doorset Size | Doorset Code | Doorset with Factor Finished Frame | U Value |
|-----------|--------------|--------------|------------------------------------|---------|
| Redesdale | 927 X 2095mm | 29REDS+DS | 29REDS+DSFF | 2.3 |
| Croft | 927 X 2095mm | 29CRFT+DS | 29CRFT+DSFF | 1.9 |
| Harlequin | 927 X 2095mm | 29HARL+DS | 29HARL+DSFF | 2.4 |
| Thornbury | 927 X 2095mm | 29THOR+DS | 29THOR+DSFF | 2.4 |
| Eversley | 927 X 2095mm | 29EVES+DS | 29EVES+DSFF | 2.3 |

STRUCTURAL OPENINGS, SEE PAGE 18



Kensington Plus Timber Doorset Collection - Fully Finished



The Kensington Plus Collection doors are Chain of Custody Certified by the FSC (Forest Stewardship Council) This means the timber used to manufacture these doors comes from forests which are well managed according to strict environmental standards.

Fully Finished Glazed Oak veneered doors ready to install with no further decoration required.



SERNA



ROMERO



STANDARD SPECIFICATION

- Factory glazed door (as depicted)
- Fully finished Oak effect veneer
- White adjustable hinge
- Multi point locking
- Silver handle satin finish
- Factory finished Hi-Build white PEFC Certified Softwood frame
- 140mm hardwood sill with mobility threshold
- Factory glazed with 16.5mm triple glazed units

OPTIONAL EXTRAS

- Factory finish frame options - see page 7
- Letter plate, security chain and viewer in gold or silver effect - see page 7
- Gold effect handle and cylinder thumbturn handle in gold or silver effect
- Brown adjustable hinge
- Fully finished hardwood frame

| Door | Doorset Size | Doorset Code | U Value |
|--------|--------------|--------------|---------|
| Serna | 902 X 2125mm | 28SERN+DS | 2.4 |
| | 927 X 2095mm | 29SERN+DS | 2.4 |
| Romero | 902 X 2125mm | 28ROME+DS | 2.4 |
| | 927 X 2095mm | 29ROME+DS | 2.4 |

STRUCTURAL OPENINGS, SEE PAGE 18

Mackintosh inspired Timber Doorset Collection



This range has been inspired by the work of Charles Rennie Mackintosh, the great architect, designer and artist. Utilising decorative coloured glass panels the designs replicate the style of one of the greatest creative figures of the early 20th century.

With luxurious cherry veneer and double glazed panels for energy efficiency, these doors will particularly suit homes from the early 1920s and 1930s replicating the designs popular at the time.



STANDARD SPECIFICATION

- Luxurious Cherry Veneer
- FSC Chain of Custody certified
- Double Glazed with 14.4mm units
- White adjustable hinge
- Multi point locking
- Silver handle satin finish
- Factory finished Hi-Build white PEFC Certified Softwood frame
- 140mm hardwood sill with mobility threshold

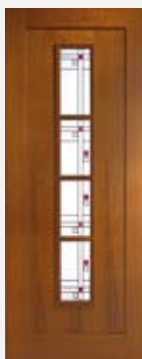


OPTIONAL EXTRAS

- Factory finish frame options - see page 7
- Letter plate, security chain and viewer in gold or silver effect - see page 7
- Gold effect handle and cylinder thumbturn handle in gold or silver effect
- Brown adjustable hinge



ABINGTON



LENZIE



MCKEAN



TORRANCE

| Door | Doorset Size | Doorset Code | U Value |
|----------|--------------|--------------|---------|
| Lenzie | 927 X 2095mm | 29LENZ+DS | 2.5 |
| Abington | 927 X 2095mm | 29ABIN+DS | 2.6 |
| McKean | 927 X 2095mm | 29KEAN+DS | 2.6 |
| Torrance | 927 X 2095mm | 29TORR+DS | 2.6 |

STRUCTURAL OPENINGS, SEE PAGE 18

SecureFit™ High Performance Flat-Entrance doors

JELD-WEN Securefit™ Doorsets are designed specifically for flat-entrance situations where the highest standards in product performance are required. These doorsets comply with approved building document M, B, E and L.

SECUREFIT™ DOORSET BUILDING REGULATION COMPLIANCE

Approved Document M: Available in a range of sizes for wider access as well as glazed doors with mobility vision panels.

Approved Document B: Securefit™ doorsets are tested to BS476 Part 22 and perform to FD30 requirement providing 30-minute fire protection. This product is also supported by the BWF Certificate Fire Door Set Scheme.



JELD-WEN is a member of the BWF Certifire Fire Door & Door Set Scheme



Meets the requirements of PAS 23/24 Secured By Design

PAS 23: General performance requirements for door assemblies:

- Latching test
- Hardware operating test
- Initiate movement test
- Resistance to vertical loads
- Resistance to static torsion
- Slamming resistance
- Resistance to humidity
- Resistance to thermal variation

PAS 24: Enhanced security performance requirements for door assemblies:

- Hard and soft impact test
- Mechanical loading test
- Cutting and manipulation test
- Security hardware test
- BS EN 1303 Grade 5 Key Security

Part E: The laminated core construction, acoustic seals and drop down seals assist this product in compliance with acoustic regulations where flat entrance doors are required to have a sound reduction index of 29dBRw.

Part L: JELD-WEN Securefit™ Doorsets provide improved conservation of fuel and power, plus have a *U* Value of 1.60 W/m²K or better, meeting the requirements of this regulation.



Component Breakdown - Flat entrance doorsets



1. VIEWER

Door Viewers are fitted as standard. These are available in gold or silver effect.



2. ADJUSTABLE KEEP

Door keeps are fully adjustable for ease when fitting on site.



3. ESPAGNOLETTE LOCK

3-Point espagnolette lock, police approved under the requirement of PAS 23/24



4. HANDLE

Lever Handle supplied and available in gold effect or silver effect finish.



5. CYLINDER GUARD

For extra security Securefit™ Doorsets are supplied with a cylinder guard system.



6. HINGES

Supplied with three steel hinges in a choice of gold or silver effect. Hinges are CE Certified.



7. DROP DOWN SEAL

A lorient drop down seal is supplied for improved acoustic performance.



8. INTUMESCENT & ACOUSTIC SEALS

Fitted into the head and jams of the frames, are intumescent strip including smoke and acoustic seals.



SecureFit™ Specifications - Flat entrance doorsets

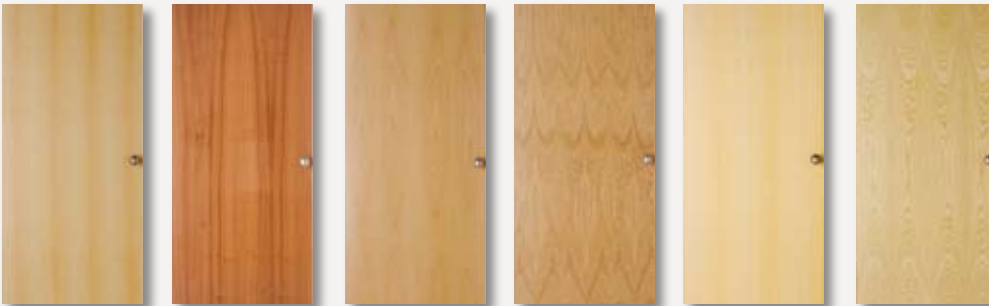
Doorset Options - Laminated Core

MOULDED DOORSETS



Rockport Arlington Atherton Cambridge Camden Bostonian Oakfield

REAL WOOD VENEERED DOORSETS



African Maple Sapele Beech White Oak Koto Ash

PAINT GRADE VENEER



Flush

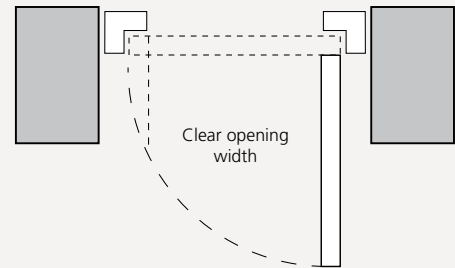
Most commercially available veneers can be supplied to special order.

| Door Size | Clear Opening Size |
|-------------------|--------------------|
| 1981 x 838 x 44mm | 776mm |
| 1981 x 864 x 44mm | 802mm |
| 1981 x 914 x 44mm | 852mm |
| 1981 x 926 x 44mm | 864mm |

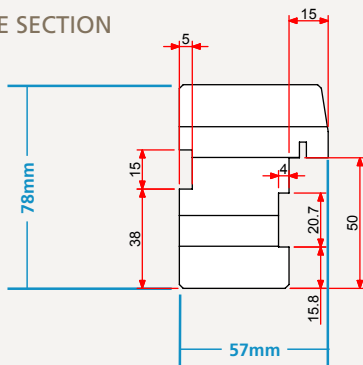


Based on a 15mm stop and a 3mm edge gap

STRUCTURAL OPENINGS, SEE PAGE 18



FRAME SECTION



CARPET CLEARANCE - 15mm



Carpet clearance can be adjusted by cutting or packing each jamb at the time of installation



Securefit™ Flat entrance doorset Information

Delivery

JELD-WEN doorsets should arrive on site no more than two days prior to installation; this will avoid unnecessary damage through handling and general site conditions. Product should be thoroughly checked when delivered to ensure no damage has occurred during transport.

Storage

Doorsets should be stored in a cool, dry place and stacked level in a horizontal position with a sufficient gap below the stack to allow air circulation. Please note: do not store doorsets in buildings that are being plastered or have recently been completed.

Installation

When installing the doorset where possible the fixing brackets should be used. In the event of an impractical wall it is possible to just screw through doorstop groove along the jambs.

When fitting a fire door it is essential that additional fixing takes place through the groove in the jambs. If there are any spaces between the frame and the wall then an appropriate fire-resisting material must be used to seal those gaps. Refer to BS 8214:1990.

Decoration where required

If doors are supplied unfinished they should be decorated in accordance with British Standard Code of Practice BS6150:2006 and BS8000 Part 5:1990. The stain or paint manufacturers instructions must be followed.

All surfaces must be treated (sealed) at the same time to prevent distortion from moisture imbalance. A base coat stain or paint primer are in themselves not a seal.

Maintenance

All ironmongery should be lubricated on a regular basis to ensure smooth and correct functioning. JELD-WEN interior doors can be cleaned using a damp cloth, no abrasive materials should be used as this can damage the face of the door.

Guarantees


JELD-WEN ReadyFit and Securefit™ doorsets have a 10 year guarantee against manufacturing defects. Factory finishing has a 5 year guarantee providing regular maintenance has been given to the door.

For full terms and conditions along with further information on guarantees please refer to our current Doors Catalogue or request details at www.jeld-wen.co.uk


Sidelights & Frames

Sidelights are available to fit with any doorsets shown in this brochure (excluding the Clifton). They are made to order and are available in standard sizes. Sidelights are softwood stained or primed with factory finished option available - see page 7. Sidelight design will not match the doorleaf designs.

They are factory clear glazed as standard for improved energy efficiency to comply with Building Regulation approved document 'L' and available in the options shown on page 7.

| PX | | |
|---|---------------|-----------------|
|  | | |
| WIDTH | METRIC HEIGHT | IMPERIAL HEIGHT |
| SOFTWOOD | | |
| 257mm | SL25PX | |
| 332mm | SL33PX | SL3366PX |
| 407mm | SL40PX | |
| 482mm | SL48PX | |
| 557mm | SL55PX | SL5566PX |
| FACTORY-GLAZED U-VALUE | 1.9 | 1.9 |

For pricing contact the sales office on 0845 122 2890.

| TO SUIT IMPERIAL DOORS 1981mm (6'6") HIGH X 838 (2'9") WIDE | | | |
|---|-----------|-----------------|------------------|
|  | | | |
| FRAME WIDTH | SIDELIGHT | HEIGHT 2079mm | HEIGHT 2097mm |
| 1232mm | | | |
| 1307mm | SL3366 | FE13029 £145.94 | |
| 1382mm | | | |
| 1532mm | SL5566 | FE1529 £153.63 | |
| 1682mm | SL3366 | | FED16829 £187.35 |
| 1832mm | | | |
| 2132mm | SL5566 | | FED21329 £209.29 |

* When ordering, please state "as catalogue" or "opposite catalogue". "As catalogue" means the sidelight is on the left when view from the outside.

Structural Opening sizes

| RANGE | ACTUAL DOORSET SIZE (mm) | DOOR SIZE (mm) | STRUCTURAL OPENING (mm) | MOBILITY CLEAR OPENING WIDTH |
|-----------------|--------------------------|----------------|-------------------------|------------------------------|
| COMPOSITE | 851 X 2095 | 762 X 1981 | 862 X 2105 | |
| | 927 X 2095 | 838 X 1981 | 938 X 2105 | |
| | 1003 X 2095 | 914 X 1981 | 1014 X 2105 | |
| CLIFTON | 851 X 2094 | 758 X 1989 | 861 X 2105 | |
| | 927 X 2094 | 834 X 1989 | 937 X 2105 | |
| KENSINGTON | 927 X 2095 | 838 X 1981 | 938 X 2105 | |
| KENSINGTON PLUS | 927 X 2095 | 838 X 1981 | 938 X 2105 | |
| | 902 X 2125 | 813 X 2032 | 912 X 2125 | |
| MACKINTOSH | 927 X 2095 | 838 X 1981 | 938 X 2105 | |
| SECUREFIT™ | 928 X 2045 | 838 X 1981 | 938 X 2050 | 776 |
| | 954 X 2045 | 864 X 1981 | 964 X 2050 | 802 |
| | 1004 X 2045 | 914 X 1981 | 1014 X 2050 | 852 |
| | 1016 X 2105 | 926 X 2040 | 1026 X 2110 | 864 |

Composite, Kensington, Kensington Plus & Mackintosh Doorset Threshold

All standard Doorsets are supplied with a mobility threshold and hardwood sill - see below.



Standard 140mm Hardwood Sill with Mobility Threshold*

*subject to installation detail

How to Order



All Doorsets are made to order from our UK manufacturing sites. Please call 0845 122 2890. This easy to order checklist will help ensure we have all the information needed.

Once you have selected your doorset range:

Step 1 - Product Code (and colour)

Step 2 - Handing of Doorset (as viewed from outside)

Step 3 - Open in or open out

Step 4 - Frame colour options

Step 5 - Quantity

Step 6 - Options - if you require options that differ from the standard specification i.e. ironmongery colour, glazing e.t.c, please state.

Step 7 - Delivery Details

JELD-WEN UK Ltd reserve the right to alter specifications and descriptions without prior notice.



For more information on JELD-WEN products or to request brochures, contact our sales office at **0845 122 2890** or visit our website at **www.jeld-wen.co.uk**



JELD-WEN
WINDOWS & DOORS®

JELD-WEN UK Ltd
Woodhouse Mill, Sheffield S13 9WH
t: 01142 542 322 | f: 01142 293 260
e: marketing@jeld-wen.co.uk